

# 第77回国民体育大会 (いちご一会とちぎ国体) レーンコンディション



<b>Oil Pattern Distance:</b>	<b>39 Feet</b>	<b>Reverse Brush Drop:</b>	<b>39 Feet</b>	<b>Oil Per Board:</b>	<b>50 uL</b>
<b>Forward Oil Total:</b>	<b>17.1 mL</b>	<b>Reverse Oil Total:</b>	<b>17.75 mL</b>	<b>Volume Oil Total:</b>	<b>34.85 mL</b>
<b>Forward Boards Crossed:</b>	<b>342 Boards</b>	<b>Reverse Boards Crossed:</b>	<b>355 Boards</b>	<b>Total Boards Crossed:</b>	<b>697 Boards</b>

	Start	Stop	Loads	Speed	Crossed	Start	End	Feet	T.Oil
1	2L	2R	5	26	185	0.0	14.7	14.7	9250
2	4L	4R	3	26	99	14.7	25.7	11.0	4950
3	6L	6R	2	26	58	25.7	33.0	7.3	2900
4	2L	2R	0	26	0	33.0	39.0	6.0	0

	Start	Stop	Loads	Speed	Crossed	Start	End	Feet	T.Oil
1	2L	2R	0	18	0	39.0	34.0	-5.0	0
2	8L	8R	2	18	50	34.0	28.9	-5.1	2500
3	6L	6R	2	14	58	28.9	25.0	-3.9	2900
4	4L	4R	3	14	99	25.0	19.1	-5.9	4950
5	2L	2R	4	14	148	19.1	11.2	-7.9	7400
6	2L	2R	0	10	0	11.2	0.0	-11.2	0

Conditioner:  
Type In or Select One

TransferType:  
Type In or Select One

Forward



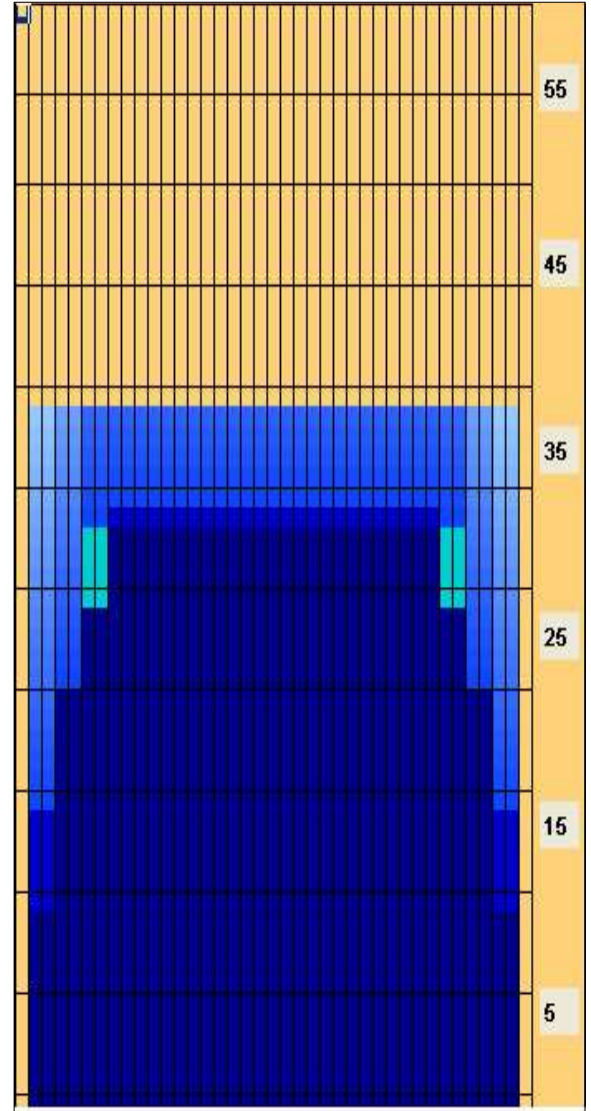
Reverse



Combined



Buff



Item	3L-7L:18L-18R	8L-12L:18L-18R	13L-17L:18L-18R	18L-18R:17R-13R	18L-18R:12R-8R	18L-18R:7R-3R
Description	Outside Track:Middle	Middle Track:Middle	Inside Track:Middle	Middle: Inside Track	Middle:Middle Track	Middle:Outside Track
Track Zone Ratio	1.36	1	1	1	1	1.36

